

AGENDA

Meeting: AMESBURY AREA BOARD
Place: Antrobus House, 39 Salisbury St, Amesbury SP4 7HH
Date: Thursday 31 January 2013
Time: 6.00 pm

Including the Parishes of Allington, Amesbury, Berwick St James, Bulford, Cholderton, Durnford, Durrington, Figcheldean, Great Wishford, Idmiston, Milston, Newton Toney, Orcheston, Shrewton, Stapleford, Steeple Langford, Tilshead, Wilsford Cum Lake, Winterbourne, Winterbourne Stoke, Woodford and Wylve.

The Area Board welcomes and invites contributions from members of the public. The chairman will try to ensure that everyone who wishes to speak will have the opportunity to do so.

If you have any requirements that would make your attendance at the meeting easier, please contact your Democratic Services Officer.

Refreshments and networking opportunities will be available from 5:30pm.

Please direct any enquiries on this Agenda to Kirsty Butcher Democratic Services Officer, on 01225 713948 or email kirsty.butcher@wiltshire.gov.uk

or Karen Linaker (Amesbury Community Area Manager), Tel: 01722 434697 or 07917 751728, or email karen.linaker@wiltshire.gov.uk

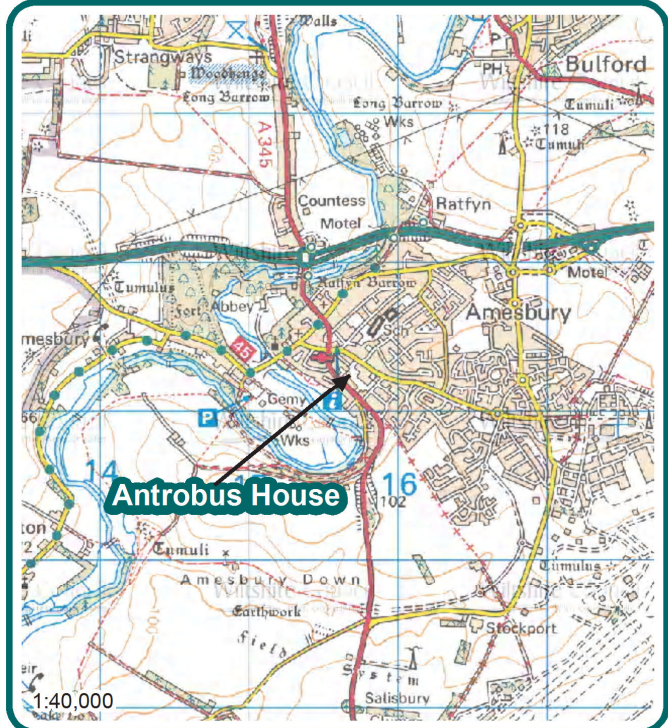
All the papers connected with this meeting are available on the Council's website at www.wiltshire.gov.uk

Press enquiries to Communications on direct lines (01225) 713114 / 713115.

Wiltshire Councillors

Mike Hewitt	Bourne and Woodford Valley
John Noeken	Amesbury East
John Smale (Chairman)	Bulford, Allington & Figcheldean
Ian West	Till & Wylve Valley
Fred Westmoreland (Vice Chairman)	Amesbury West
Graham Wright	Durrington & Larkhill

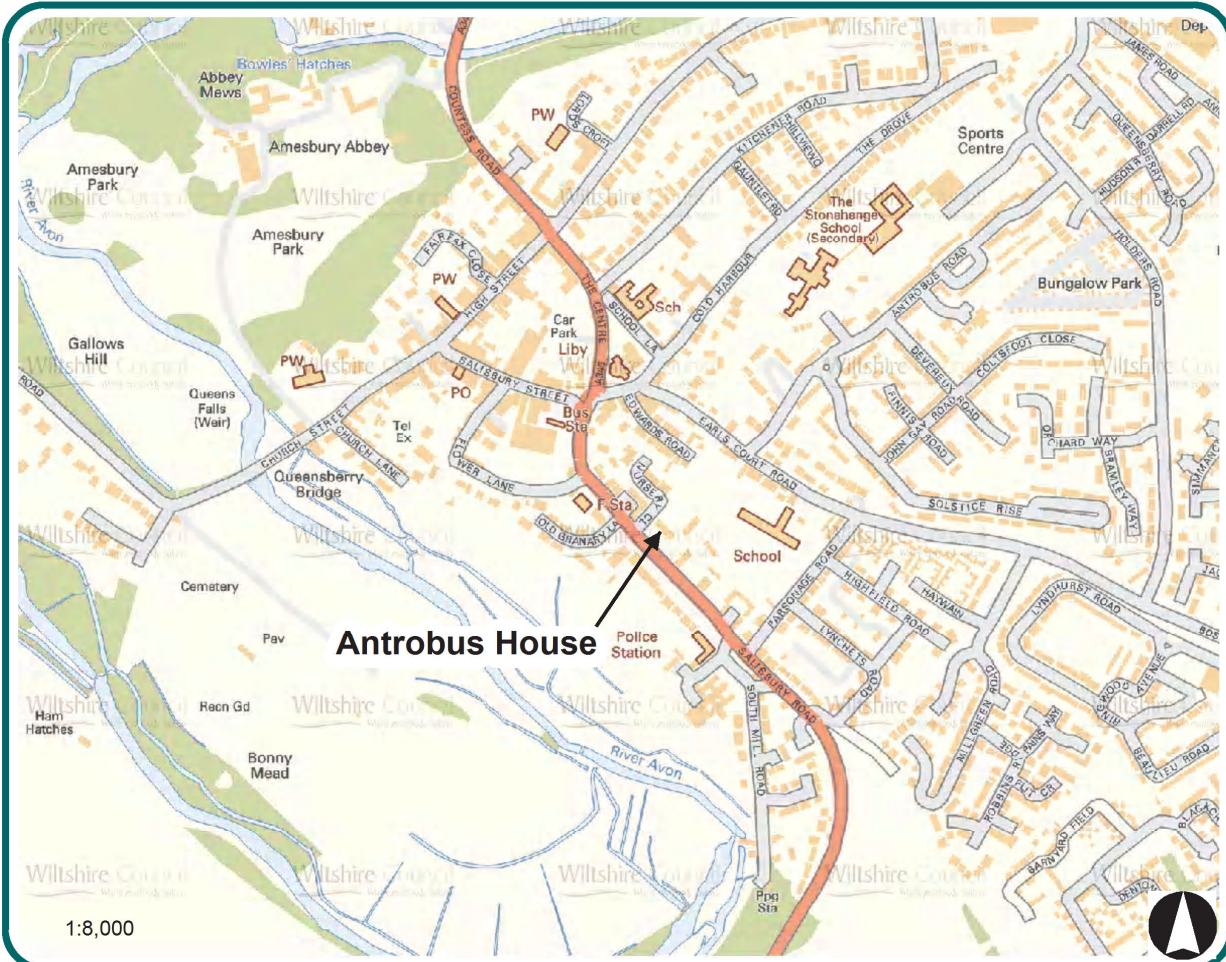
Meeting Location



Antrobus House
39 Salisbury Road
Amesbury
Salisbury
SP4 7HH



 Where everybody matters



Future Meeting Dates

Thursday, 21 February 2013

6.00 pm

Durrington Village Hall, High St, Durrington SP4 8HH

Thursday 30 May 2012

6.00 pm

Winterbourne Glebe Hall, Winterbourne Earls, Salisbury SP4 8HA

Thursday 27 June 2012

Informal meeting with Town and Parish Councils

6.00 pm

Venue TBC

Items to be considered

- 1 **Welcome and Introductions** **6.00pm**
- 2 **Apologies for Absence**
- 3 **Minutes** (*Pages 1 - 8*)
To confirm the minutes of the meeting held on 22 November 2012.
- 4 **Declarations of Interest**
To receive any declarations of disclosable interests or dispensations granted by the Standards Committee
- 5 **Chairman's Announcements** (*Pages 9 - 16*) **6.05pm**
- a) Draft Police and Crime Plan
To inform the Area Board of the public consultation on the draft Police and Crime plan.
- b) Emergency Planning Exercise for all Town / Parish Councils in Amesbury
To inform the board that an exercise will take place on Wednesday 27th February 2013, commencing at 19:30 and ending at 21:00. It will consist of a series of envelopes containing a developing scenario that need to be opened at specified times. Response to the issues can then be phoned through to a member of the emergency planning team.

Please direct any queries to caroline.parfitt@wiltshire.gov.uk (Tel: 01225 713159)
- c) Wiltshire Online Connectivity and Provision
To update the Area Board on the progress of the programme.
- 6 **Your Local Issues** **6.15 pm**
To receive an update from the Community Area Manager on local issues.

- | | | |
|----|--|----------------|
| 7 | <p>Updates from Partners and Town/Parish Councils (<i>Pages 17 - 26</i>)</p> <p>To receive updates from the Town and Parish Council Representatives, and from other partner organisations, including outside bodies on which the Area Board is represented.</p> | 6.20 pm |
| 8 | <p>Updates from Community Plan Working Groups</p> <p>To receive updates from the following:</p> <ul style="list-style-type: none"> • Community Facilities, Health and Well-Being • Crime and Community Safety • Sport, Leisure and Culture • Environment • Housing, Economic Development, Planning and Tourism | 6.30 pm |
| 9 | <p>Update from Speedwatch Working Group</p> <p>To receive an update from Councillor Wright on the work of the Speeding Working Group.</p> | 6.40 pm |
| 10 | <p>Update from the Community Area Transport Group (CATG)</p> <p>To consider a verbal update and any recommendations from the Community Area Transport Group (CATG) in relation to the funding available towards Local Transport Projects.</p> | 6.45 pm |
| 11 | <p>SID deployment programme (<i>Pages 27 - 28</i>)</p> <p>To receive details of the SID deployment programme for the forthcoming cycle commencing on 7 January 2013.</p> | 6.55 pm |
| 12 | <p>Good Neighbours</p> <p>To introduce Janet Tidd as the Good Neighbour Co-Ordinator for the Amesbury area.</p> | 7.05 pm |
| 13 | <p>Impact of Welfare Reform Bill (<i>Pages 29 - 30</i>)</p> <p>To view a short film on the impact of the Welfare Reform Bill. More information can be found in the agenda.</p> | 7.10 pm |
| 14 | <p>Training for Dog Wardens</p> <p>To confirm funding for training.</p> | 7.25 pm |
| 15 | <p>Community Area Grants (<i>Pages 31 - 36</i>)</p> <p>To determine any applications for Community Area Grant funding.</p> | 7.35 pm |

16 **Future Meeting Dates, Evaluation and Close** (*Pages 37 - 38*) **7.50 pm**

To note the attached Forward Work Plan.

The next meeting of the Amesbury Area Board will be held on 21 February 2012 at Durrington Village Hall.

MINUTES

Meeting: AMESBURY AREA BOARD
Place: Antrobus House, 39 Salisbury Road, Amesbury, SP4 7HH
Date: 22 November 2012
Start Time: 6.00 pm
Finish Time: 7.32 pm

Please direct any enquiries on these minutes to:

Kirsty Butcher Democratic Services Officer, Tel: 01225 713948 or (e-mail) kirsty.butcher@wiltshire.gov.uk

Papers available on the Council's website at www.wiltshire.gov.uk

In Attendance:

Wiltshire Councillors

Cllr John Smale (Chairman), Cllr Graham Wright, Cllr Mike Hewitt, Cllr John Noeken, Cllr Ian West and Cllr Fred Westmoreland (Vice Chairman)

Councillor Stuart Wheeler – Cabinet Member for Campus Development and Culture

Wiltshire Council Officers

Kirsty Butcher, Democratic Services Officer
Tom Bray, Southern Wiltshire Community Area Manager
Adrian Hampton, Head of Local Highways & Streetscene (Northern Area)

Town and Parish Councils

Durrington Town Council – Mary Towle and D Healing
Tilshead Parish Council – G Murray
Winterbourne Parish Council – R E and D J Baker
Wylve Parish Council – Tom Cox

Partners

Police – Inspector C Lange

Total in attendance: 23

<u>Agenda Item No.</u>	<u>Summary of Issues Discussed and Decision</u>
1	<p><u>Welcome and Introductions</u></p> <p>The Chairman welcomed everyone to the meeting of the Amesbury Area Board and thanked Antrobus House for hosting the meeting.</p> <p>At the Chairman's invitation, the Councillors and officers sitting at the front of the meeting introduced themselves.</p>
2	<p><u>Apologies for Absence</u></p> <p>Apologies for absence had been received from:</p> <ul style="list-style-type: none"> • Karen Linaker – Amesbury Community Area Manager • Mark Smith – Service Director Neighbourhood Services • Janet Tidd – Idminston Parish Council / Good Neighbour Co-Ordinator
3	<p><u>Minutes</u></p> <p><u>Decision</u></p> <p>The minutes of the meeting held on 20 September 2012 were agreed as a correct record and signed by the Chairman.</p>
4	<p><u>Declarations of Interest</u></p> <p>Councillor Noeken provided an update regarding standards and explained that there was a temporary relaxation for the need for unitary councillors to declare interests at meetings providing the interest had been declared in advance.</p>
5	<p><u>Chairman's Announcements</u></p> <p>Community Infrastructure Levy</p> <p>The Chairman drew attention to the announcement circulated at the meeting and attached to these minutes and highlighted that the consultation deadline had been extended for Town and Parish Councils until Wednesday 5 December 2012.</p> <p>a) Informal Adult Education in Wiltshire - update</p> <p>More information was available on page 13 of the agenda. The Chairman drew attention to the Cabinet decision to facilitate adult education locally.</p>

	<p>b) Understanding Autism</p> <p>The information available on pages 15 to 18 of the agenda was noted. The Chairman drew attention to the new plan and noted that it would be discussed by the Community Facilities, Health and Well-Being Group.</p> <p>c) Local Funding for Towns</p> <p>The information available at page 19 of the agenda was noted and Amesbury Town were congratulated on their successful bid.</p> <p>d) Potential Bus Station Closure</p> <p>Councillor Noeken drew attention to news of the closure of the Wilts. & Dorset bus stations in Amesbury and Salisbury to enable their sale for redevelopment. The Board agreed to notify the planning department of their concerns regarding the bus stop and pick up positions and the need to give consideration to lay-bys within any redevelopment proposal.</p>
6	<p><u>Updates from Partners and Town/Parish Councils</u></p> <p>The Chairman referred to the updates set out in the agenda and invited further updates from Town/Parish Councils and other Partners, including outside bodies. It was noted that the preferred option was for written updates, to minimise time spent during the meeting.</p> <p>NHS</p> <p>Written report noted.</p> <p>Wiltshire Involvement Network</p> <p>Written report noted.</p> <p>Wiltshire Fire and Rescue Service</p> <p>Written report noted.</p> <p>Police</p> <p>Inspector Lange introduced the report seen at pages 27 to 29 of the agenda. He noted that there had been an increase in non-domestic burglaries year on year and this area would be targeted. He highlighted that 7 warrants had been issued in the last 10 days to search houses, which had resulted in stolen goods being recovered. He urged people who had lost items to contact the police. He confirmed that work undertaken to address the issue of young people in Amesbury town had been quite successful.</p>

	<p>In response to questions he confirmed he would look at the law around mobile traffic lights and that he would take both the issue of people running red lights at Broken Cross Bridge and the speeding issue within the closed road to the next Speeding Working Group to look at ways they can help.</p> <p>Boundary Commission</p> <p>Councillor West informed the Board that the Boundary Commission had adopted the counter proposals for Till and Wylve Valley, which restored them to the Salisbury constituency and thanked the public for their support. He urged all to support the revised proposals.</p> <p>Tenants Panel</p> <p>Councillor Hewitt announced he would be seeking representatives from the Tenants Panel to report back to their Area Boards.</p>
7	<p><u>Updates from Community Plan Working Groups</u></p> <p>Community Facilities, Health and Well-Being</p> <p>The first meeting of the group had identified target areas which required specialist work.</p> <p>Crime and Community Safety</p> <p>Work had been done to identify the level of detail needed to advance issues including domestic abuse and alcohol misuse, and further mapping exercises were needed to make advances in these areas. Attention was drawn to the current Alcohol Awareness Week and all were encouraged to take the pledge to give up alcohol for 2 days a week.</p> <p>Sport, Leisure and Culture</p> <p>It was highlighted that the responsibility for this crossed into the remit for the Shadow Community Operations Board (SCOB) and the group were looking forward to being a useful arm for the SCOB team in terms of information gathering. Concern over transport for youth to get to sport facilities was raised and it was noted that this was currently under investigation.</p> <p>Environment</p> <p>Dog fouling was one of the priority issues identified and Parishes highlighted the need to understand the law behind dog fouling and enforcement. The need for funding local training was noted.</p>

	<p>Housing, Economic Development, Planning and Tourism</p> <p>The need for simplified guides to planning, neighbourhood plans and asset transfer was highlighted. The idea for a community diary was well received and supported.</p>
8	<p><u>Update from Speeding Working Group</u></p> <p>Councillor Wright praised the hard work of the group and announced that information regarding local issues would soon be available electronically.</p>
9	<p><u>Update from the Community Area Transport Group (CATG)</u></p> <p>Councillor Hewitt provided an update on the work of the CATG, talking through the budget sheet seen on page 31 of the agenda and highlighted how it showed the benefits of partnership working.</p> <p>Thanks was given to the CATG for the work on Church Street in Amesbury which would provide a major improvement and the dropped kerbs completed in Salisbury Road, Shrewton which had improved road safety.</p> <p>The Board noted the budget.</p>
10	<p><u>Good Neighbours</u></p> <p>This item was deferred and will now be on the agenda for the meeting being held on 31 January 2013.</p>
11	<p><u>Impact of Welfare Reform Bill</u></p> <p>This item was deferred and will now be on the agenda for the meeting being held on 31 January 2013.</p> <p>It was noted that the impact was already being seen within the community area.</p>
12	<p><u>The Legacy of 2012</u></p> <p>Attention was drawn to the slides within the presentation and how the legacy was far-reaching, with more events already being planned for 2013.</p>
13	<p><u>Amesbury Shadow Campus Operations Board</u></p> <p>Councillor Stuart Wheeler introduced the item and detailed how the shadow community operations board (SCOB) would assist with the planning of the campus proposal for the Amesbury Community Area. He explained that it would include accessible IT facilities, community space, catering facilities and personal care facilities for the disabled.</p> <p>He explained that the key role of the SCOB would be to consult with and communicate out to the local community identifying what facilities are both</p>

wanted and needed in the community area.

In response to questions he explained that a review of leisure services had shown that it would cost the same to implement the campus programme as it would to keep existing leisure facilities open and health and safety compliant.

Decision:

i. The Board agreed the appointments to the Amesbury Shadow Community Operations Board as detailed below:

SECTOR	APPOINTED MEMBER	AGREED DEPUTY
Wiltshire Council Officer x1	Rachel Goff	
Area Board Representative x1	Cllr Fred Westmorland	Cllr Graham Wright
Town/Parish Council x1	Cllr Andrew Rhind-Tutt	
Education and Young People x2	Claire Broom David Edwards	
Wider Community x1		
User and Community Groups x3	Janet Tidd David Widgington Alex Southey	

ii. The Board agreed to extend the expression of interest for a representative of the Wider Community for another three weeks.

14

Delegated Authority

The Board was asked to agree the recommendation as set out in the agenda.

Decision:

The Board agreed that in respect of urgent matters that may arise from time to time between meetings of an Area Board, the Community Area Manager, in consultation with the Unitary Councillors on the Area Board, , be granted delegated authority to make any necessary decisions (such as agreement of CATG funding allocations and Community Area Partnership Funding). A report explaining the decision and the reasons why it was considered to be urgent shall be reported to the next ordinary meeting of the Area Board to ensure that such decisions are subject to public examination.

15

Community Area Grants

At the Chairman's invitation, Councillor John Noeken, Lead Member for Grants, introduced this item.

	<p><u>Decision</u></p> <p>Splitz Support Service was awarded £3250 towards TeenZtalk.</p> <p><i>Reason - The application met the Community Area Grants Criteria 2012/13 and demonstrates a link to the community plan by helping young people involved in or affected by domestic abuse.</i></p> <p><u>Decision</u></p> <p>Bourne Valley Scout Group was awarded £800 towards Scout Archery.</p> <p><i>Reason - The application met the Community Area Grants Criteria 2012/13 and demonstrates a link to the Community Plan by providing additional activities for young people in one of the more rural parts of the community area.</i></p> <p><u>Small Grants Scheme</u></p> <p><u>Decision</u></p> <p>Orcheston Wives was awarded £350 towards Orcheston 1900.</p> <p><i>Reason - The application met the Small Grants Scheme Criteria 2012/13.</i></p> <p>(ACTION: Karen Linaker)</p>
16	<p><u>Future Meeting Dates, Evaluation and Close</u></p> <p>The forward plan was noted.</p> <p>It was noted that the next meeting of the Amesbury Area Board would be held on 31 January 2013 from 6.00 pm – venue to be confirmed.</p> <p>The Chairman thanked everyone for attending and apologised for the lack of technical support due to the awful weather conditions to the North.</p>

Chairman's Announcements

Subject:	Police and Crime Plan consultation
Officer Contact Details:	Office of the Police and Crime Commissioner for Wiltshire and Swindon - 01380 734022
Weblink:	www.wiltshire-pcc.gov.uk
Further details available:	www.wiltshire-pcc.gov.uk

Summary of announcement:

Police and Crime Commissioner (PCC) for Wiltshire and Swindon Angus Macpherson will be seeking views on his first Police and Crime Plan.

This plan, due to be published by the end of March, will set out the Commissioner's strategic policing and crime priorities for the next five years.

It will include working with partners, including local authorities, and the voluntary community sector. It will be much wider than the Policing Plan previously produced by Wiltshire Police Authority and Wiltshire Police.

Mr Macpherson will be consulting with the public, including victims of crime, and the voluntary community sector about the plan.

As part of this the Commissioner and representatives from his office will be giving presentations at other Area Board meetings and at Swindon Borough Council Locality meetings.

From Monday 18 February, the public will also be able to read and give their views on the plan via the PCC's website – www.wiltshire-pcc.gov.uk.

Information about this Police and Crime Plan consultation is on the PCC's website.

Subject:	Wiltshire Online: Connectivity and Provision
Officer Contact Details:	Wiltshire Online Team
Weblink:	www.wiltshireonline.org

Summary of Announcement:

The Wiltshire Online Programme aims to bring availability of standard and superfast broadband to homes and businesses across the county.

The main aims of the programme are:

- A minimum of 85%, hopefully up to 95% of premises being able to access superfast broadband by 2015
- All premises to have access to a minimum broadband service of 2Mbps by 2015.

The procurement for superfast broadband was launched on 2 July with British Telecom being announced as preferred bidder on the 12 November. Following a period of contract finalisation and final approval by the government, Wiltshire Council is anticipating signing the contract at the end of January.

In February, the Wiltshire Online Programme should then be able to provide details about the overall percentage coverage of superfast broadband, the technologies to be used and high level information about the rollout plans. An update will be given to Area Boards either by providing a chairman's announcement and links to the Wiltshire Online Web site, or by a presentation.

Once the contract has been awarded, BT will build their delivery team and start upon their detailed surveying of the infrastructure across Wiltshire. Surveying will occur in phases across Wiltshire with the network rollout following shortly afterwards in that area. The timescales for this and the number of surveys to be completed will be shared after the award of the contract.

Though specific information about each community area will not be available from February, the Wiltshire Online Programme will be able to provide more specific information as the project progresses through the phases of implementation. Ahead of each phase each Community Area affected will be provided with detailed information about the forthcoming rollout particulars, including, practical advice and also guidance on how to respond to any questions.

At any time the website www.wiltshireonline.org will have the most up to date information and the Wiltshire Online Team is available to speak to.



Frequently Asked Questions

- Q. What does GWB stand for?
- A. GWB is the Great Western Broadband project – a partnership between Wiltshire Council, South Gloucestershire Council and Swindon Borough Council to provide superfast broadband to areas where this would otherwise not be commercially viable and a standard broadband service across the whole area.
- Q. So am I guaranteed to get the 2Mbps minimum speed when I run a speed test from my computer?
- A. The councils' project is to install infrastructure that has the capacity to deliver faster broadband services. Internet service providers will use this infrastructure to sell broadband packages (with different advertised speeds) to residents and businesses. The councils' cannot therefore guarantee that the actual throughput speed experienced by residents using the internet will be a minimum of 2Mbps. However, the councils will take great care to ensure that the successful supplier correctly engineers the network to deliver the highest speeds possible with the funding available. There is more information on broadband speeds.
- Q. Who will get improved broadband?
- A. The aim is for a minimum of 85% of premises across the GWB area (90% in each local authority area of Wiltshire, South Gloucestershire and Swindon) being able to access superfast broadband, over 24Mbps, by 2015 and all other premises to have a minimum access line speed of 2Mbps.
- Q. What technologies will be used to deliver high speed broadband?
- A. Broadband can be delivered through a range of technologies such as fibre optic, wireless and satellite. The exact technologies eventually used to bring enhanced broadband will be decided during the procurement process. We anticipate there may be a need for a mix of technologies to deliver the best value service and ensure that the greatest access to the highest speeds is achieved.
- Q. How much is being invested?
- A. Investment from the government, Wiltshire Council, South Gloucestershire Council and Swindon Borough Council totals over £23million plus investment from the successful contractor.
- Q. Why are the councils investing? Surely the private sector would be much better?
- A. The costs of putting in rural broadband make it less likely to be funded commercially, without this public money backing it. The technological expertise will still need to come from the private sector. Please see below.

Q. What does the final third mean?

A. It has been estimated that the private sector will cover approximately two-thirds of premises with access to superfast broadband by Spring 2014. As you would expect they are delivering this service to areas where they will get the most return for the investment. Typically this is in areas which are more urban, densely populated and closer to main infrastructure routes. The final third is where the private sector will not be deploying superfast broadband infrastructure, and are potentially in scope of public sector investment to assist delivery in these areas.

Q. What is State Aid and why is this project subject to it?

A. The European Commission (EC) requires that local authorities can only use public money to invest in areas where they can demonstrate there is no current, or planned (within the next three years) deployment of either standard or superfast broadband. These are the “white areas” and can also be termed “the target intervention areas”, i.e. those where it is possible to invest with public subsidy. This project will therefore be limited to the “white areas” only which is a legal requirement of the European Commission’s State Aid rules.

Q. What if the exchange that serves my telephone line is beyond the borders of the GWB area?

A. The project covers all homes and businesses in Wiltshire, South Gloucestershire and Swindon that we don’t expect to be provided with faster broadband without public sector intervention. It doesn’t matter where the exchange is located.

Q. My local exchange has been upgraded by BT, but I cannot receive superfast broadband – will I still benefit from this project?

A. BT and Virgin both currently supply superfast broadband to parts of Wiltshire, South Gloucestershire and Swindon. When BT announce that they are upgrading an exchange to their Infinity product (fibre to the cabinet, or FTTC) they do not necessarily upgrade all street cabinets, only those that will provide a return on investment to BT (typically 50-85% of street cabinets). There is also an issue of premises served by direct lines (exchange only lines) that do not pass through a street cabinet at all, and so can miss out on receiving the new superfast service.

Where an area is not receiving a superfast broadband service, and there are currently no known announcements of superfast broadband then the area is “in scope” for the Great Western Broadband project.

This includes postcodes served by street cabinets from BT FTTC exchanges where the street cabinet has not been upgraded. The Great Western Broadband procurement has the aim of finding a supplier who will deliver superfast broadband to at least 90% of the project area. This will be defined as the procurement process progresses, and will not be known in detail until the supplier is confirmed and the detailed survey work has been undertaken.

Q. Most people only need about 5Mbps to do what they want to on the internet. Why are you trying to get anything faster?

A. It's true that right now 5Mbps is sufficient for the majority of people to do many of the things they want to use the internet for (e.g. iPlayer, online banking and social networking). However given the speed of technological change over the past 10 years, it is hard to predict what the next 10 years might bring. We need to be ready for that to make sure that we don't get left behind. That's why we are future-proofing our network now.

It is also important our local business can access the fastest and most reliable connections to help develop their business. The internet can provide possibilities such as marketing, online sales and improved processes. An online presence can open up national and even international doors as the internet provides a level playing field and can bridge the gap between small businesses and multi-national corporations. Widespread access to superfast broadband can also open up the possibility of home and flexible working which can be beneficial to both staff and their employers.

BROADBAND SPEED	THIS SPEED IS SUITABLE FOR...
250K to 1.5Mbps	Basic e-mail, web browsing
1.5 to 3Mbps	Streaming music, standard definition video, remote surveillance, telecommuting
3 to 6Mbps	File sharing (small/medium files), internet TV (iPlayer, 4OD etc)
6 to 10Mbps	Online gaming, streaming movies online, instant web page loading
10 to 25Mbps	Telemedicine, remote education, High Definition (HD) internet TV
25 to 50Mbps	HD video surveillance
50 to 100Mbps	Video conferencing (multiple users), remote supercomputing
100Mbps +	Real-time data collection, real-time medical image consultation

February update 2013

Keep warm and well

With the recent heavy snowfall and icy conditions, NHS Wiltshire is urging people to keep warm and well this winter:

“The cold can have serious consequences, increasing the risk of strokes and heart attacks as well as colds and flu,” says Medical Director Steve Rowlands “Wrapping up warm, keeping the heating turned up and keeping a well-stocked medical cabinet incase you do catch a cold or flu are all sensible steps to take.”

“It’s particularly important to stay indoors during very cold weather if you have a respiratory illness – and all elderly people should avoid going out on icy pavements. This means staying at home until later in the morning when the ice has melted. Even if you have a doctor’s appointment first thing, try and reschedule it for later – your surgery will usually be happy to help with this. It’s better to wait than risk falling on the ice.”

NHS Wiltshire has produced five top tips on staying warm and well this winter.

1. **Keep your home warm** – set your central heating to between 65 and 70 degrees Fahrenheit (18-21 degrees centigrade). Heat the room you sit in during the day to 70 degrees, and your bedroom to 65 degrees. When it’s very cold (as it is at present), set the heating to come on earlier so that you’re not waiting for your home to warm up.
2. **Have your flu jab.** Everyone over 65, or with a wide variety of health conditions, is entitled to one free of charge. Immunity takes effect almost immediately, so even though a flu outbreak is currently well underway, you can still protect yourself by getting the jab – just call your GP to make an appointment.
3. **If you do fall ill with flu, it’s best to stay at home.** Flu is caused by a virus, and cannot be treated with antibiotics – so a visit to your GP is not necessarily the best course of action.
4. **Vomiting and diarrhoea bugs** caused by norovirus are common and very infectious. This can be a very unpleasant condition, but the best advice is to stay at home and drink plenty of fluids until the symptoms pass. Norovirus is highly infectious, with an incubation period of between one and three days. For that reason, you should wait 48 hours after symptoms have stopped before going back to work or school.
5. **Keep a well-stocked medicine cabinet**, with supplies of ibuprofen, paracetamol and your favourite cold remedy at hand.

Where to go when you’re ill

The following points should be helpful when deciding who to contact.

- Pharmacies offer over-the-counter medicines and advice. As well as being open during regular retail hours, they operate an out-of-hours service on a rota basis;
- Call NHS Direct for advice on 0845 46 47 or go to www.nhsdirect.nhs.uk. They can give a wide range of advice and information about many conditions;

- Use the minor injuries units at Chippenham and Trowbridge for cuts, burns and other injuries – but not for colds, flu or vomiting;
- Make an appointment with your own GP - an out-of-hours service is also available;
- If it is a genuine emergency, go to your local A&E department or call 999 for an ambulance.

Local campaign to increase teenage booster uptake

As you may know tetanus, diphtheria and polio vaccination is given to young people aged between 13 and 18 as part of the school leavers booster. Locally the vaccine is offered to Year 10 pupils attending Council maintained schools by school nurses. Children attending independent schools are normally vaccinated through their GP practice. Across Wiltshire coverage rates of slightly over 95% have been achieved, which is in line with national averages. However, uptake figures vary significantly between individual GP practices ranging from 76% to 100%. Furthermore there has been little improvement in uptake over recent years. In response to this the Wiltshire Public Health Department have embarked on a campaign to:

- Raise the awareness among both recipients - the teenagers themselves - and their parents;
- the general public and
- local clinicians.

The campaign has been developed in partnership with young people and involves texting, posters and signposting to pertinent websites including Sparksite and the Healthy Schools websites.

The campaign began on the 7th January 2013 for about three months, with around 14,500 texts going out to teenagers on 15th January 2013. A press release will also go out after this date and posters will be displayed in local libraries and schools throughout January, February and March. It is envisaged that the campaign will be evaluated mid 2013.

The next PCT Board Meeting will be held on **Thursday 27 February** – venue to TBC – please refer to the NHS Wiltshire website: www.wiltshire.nhs.uk
 Members of the public are welcome to attend. Papers are published a week before the meeting on or on request from Stacey Saunders, NHS Wiltshire, email: stacey.saunders@wiltshire.nhs.uk
www.wiltshire.nhs.uk



Wiltshire Involvement Network (WIN)

Report to Wiltshire Area Boards

WIN is one of a nationwide system of Local Involvement Networks (LINKs) set up under the *Local Government and Public Involvement in Health Act 2007* to listen to the concerns of local people, community groups and organisations about their health and social care services. They all want to see these services change for the better. By sharing your views and experiences of health and social care in Wiltshire, you can help influence how services are planned and run.

The Wiltshire Involvement Network will cease to exist after the 31st March 2013 and will be replaced by Healthwatch Wiltshire. WIN is keen to ensure that all of its work—processes, systems, volunteer efforts and resources—are not lost during the transition into Healthwatch.

WIN is committed to ensuring that this is achieved and that Healthwatch Wiltshire is in the best place to continue the functions of the LINK in a seamless way. With this in mind WIN will be spending the beginning of 2013 producing a comprehensive Legacy document, which will be handed over to Healthwatch Wiltshire. It will aim to ensure that the voices of local people continue to be heard and that opportunities for influencing decisions within health and social care continue to be available to the public. If you feel you have something to contribute to the WIN legacy, for example – what do you think WIN has achieved or what should be included as possible priorities for Healthwatch Wiltshire to include within their first work plan, please let us know.

WIN hopes that the new Healthwatch organisation will continue the good work undertaken so far by the LINK, whilst building on the excellent relationships that have already been formed. In this way, the people of Wiltshire will continue to have a voice on the provision of all health and social care services.

Health and Social Care in Wiltshire is changing from April 2013 - come along and find out more

We have a number of key speakers who will give a presentation and answer questions on:

- *NHS reforms nationally*
- *Healthwatch Wiltshire*
- *The role of the Clinical Commissioning Group*
- *Health and Wellbeing Boards*
- *Public Health in Wiltshire*
- *Joint Health and Wellbeing Strategy*

The Wiltshire Involvement Network (WIN) invites you to attend their Public Meeting on

Saturday 2nd February 2013 10.30am – 3pm

(Arrival and refreshments from 10am with a light lunch for attendees at 12 noon)

Devizes Corn Exchange, Market Place, Devizes SN10 1HS

(parking at Station Road car park)

Please book a place and if you need any specific support to attend, please contact Tracie Clark, WIN Administrator on **01380 871800** or email winadmin.wsun@btconnect.com or write to us at The Wiltshire Involvement Network, Independent Living Centre, St Georges Road, Semington BA14 6JQ by 25th January.

The Wiltshire Involvement Network is hosted by Wiltshire and Swindon Users Network.

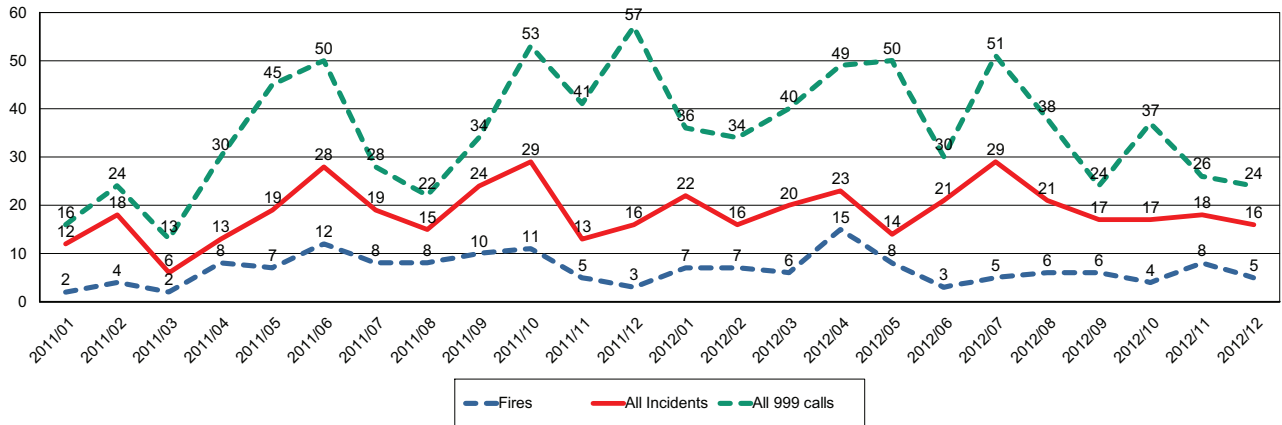
For more information on the above meeting or if you would like to be involved with WIN, or find out what our future plans are contact us on 01380 871800, winadmin.wsun@btconnect.com or find us online at www.wiltshireinvolvementnetwork.org.uk



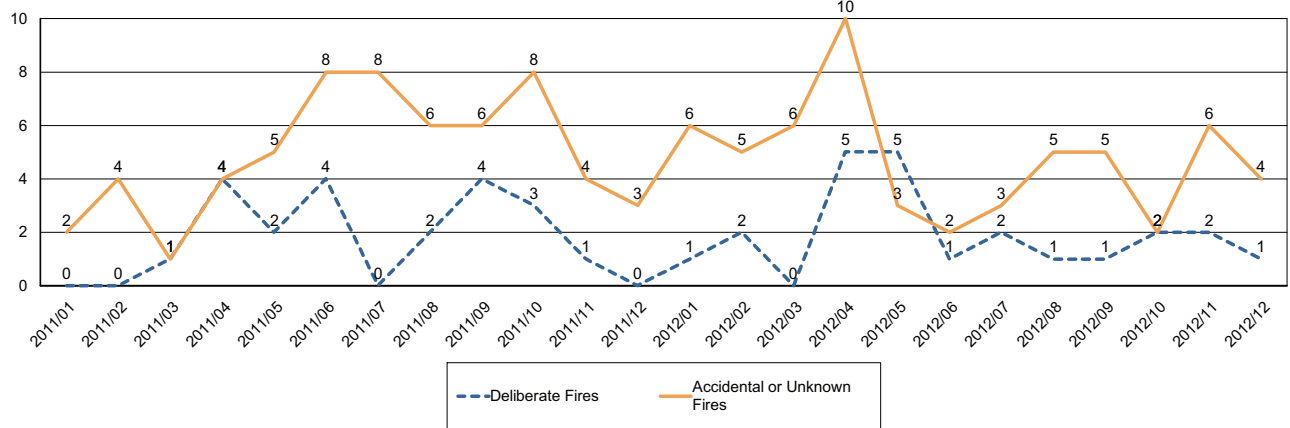
Report for Amesbury Area Board

The following is an update of Fire and Rescue Service activity up to and including December. It has been prepared using the latest information and is subject to change.

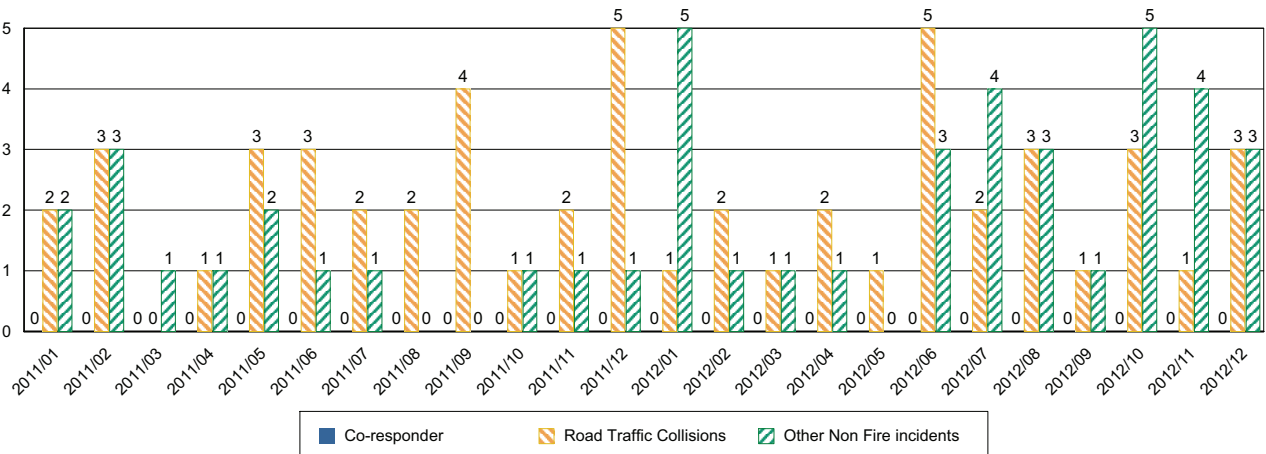
Incidents and Calls



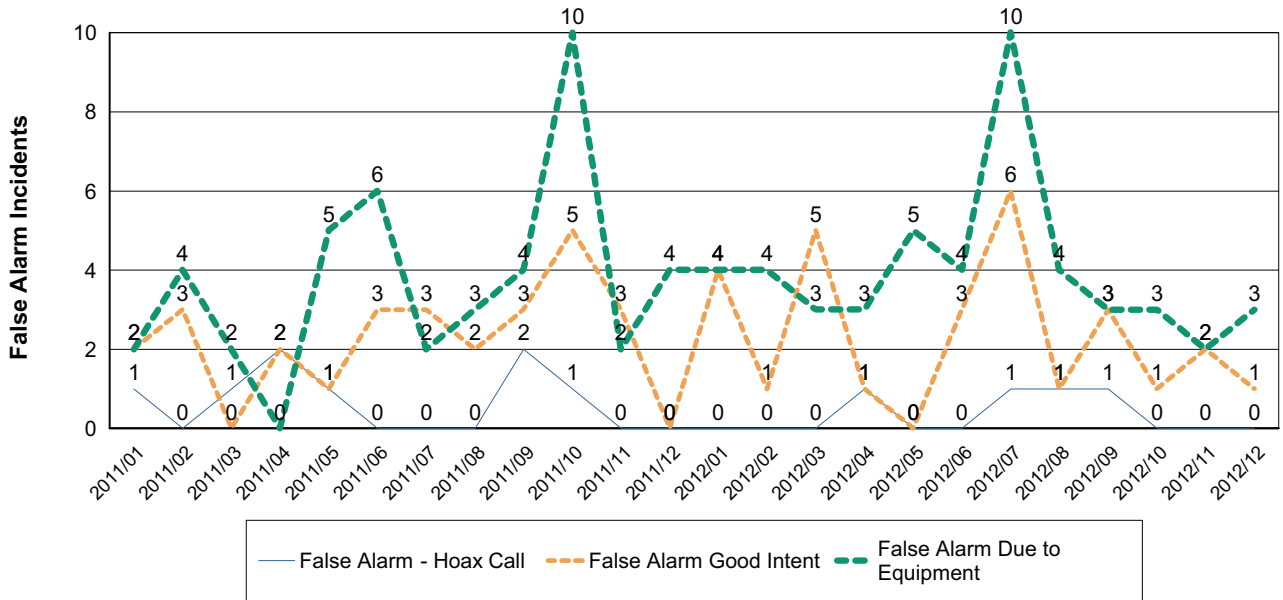
Fires by Cause



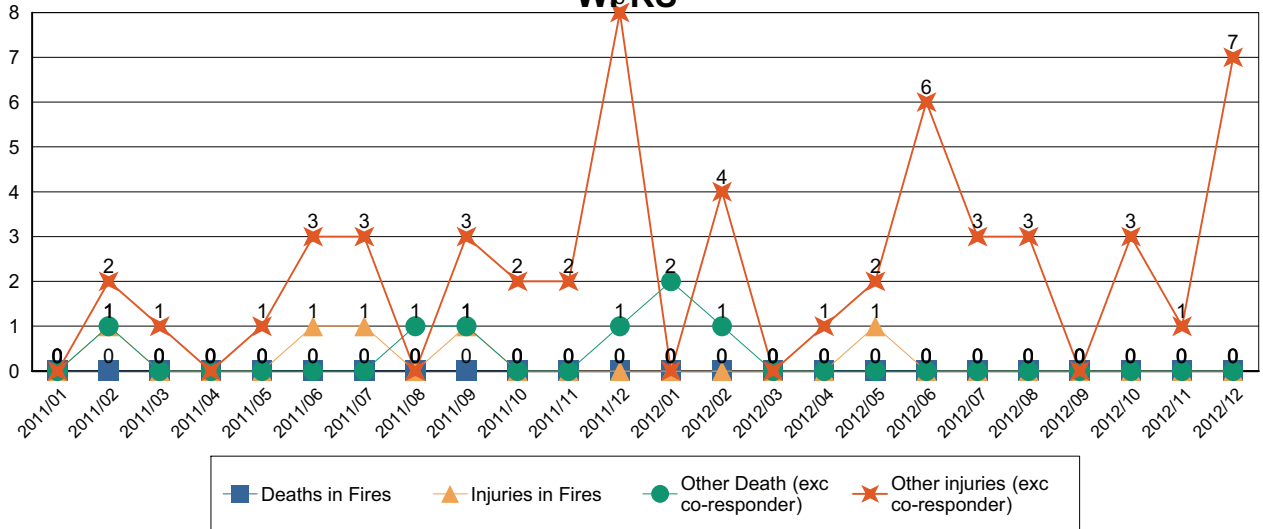
Non-Fire incidents attended by WFRS



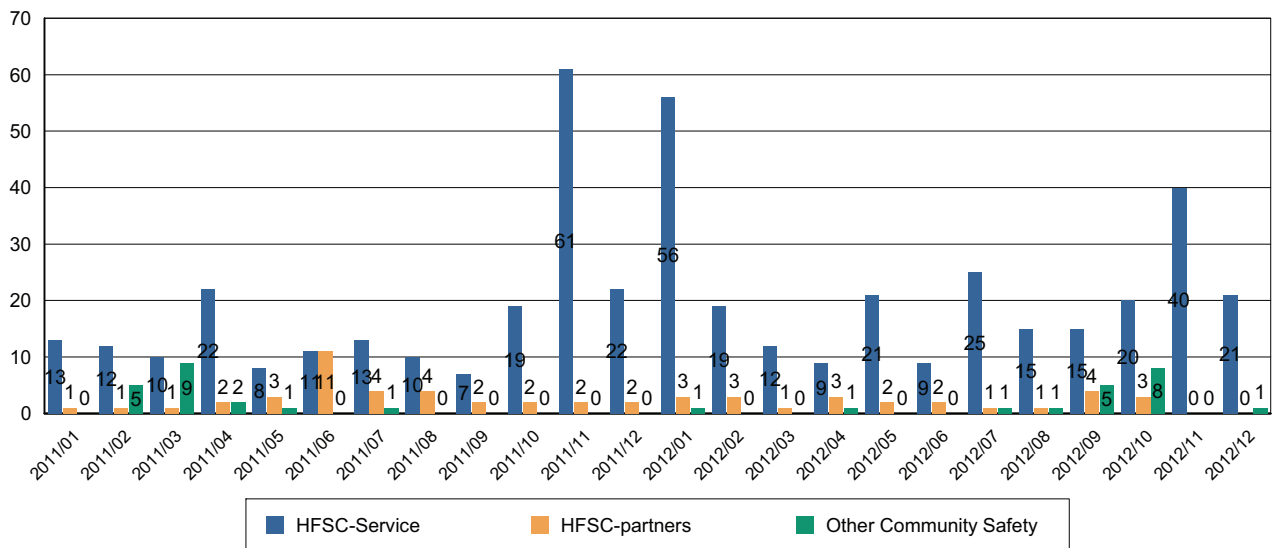
Number of False Alarm Incidents



Death & Injuries in incidents attended by WERS



Home Fire Safety Checks and other domestic safety



Comments and Interventions overleaf

Crime and Community Safety Briefing Pa Amesbury Community Area Board January 2013



1. Neighbourhood Policing

Sector Commander: Christian Lange
Team Sgt: Martin Phipps

Amesbury Town

Beat Manager – PC Lucy Smith
PCSO – Jo Atkinson
PCSO – Dean Shaw

Amesbury Rural

Beat Manager – PC Mark Steele
PCSO – Shona Maycock
PCSO – Wendy Leat
PCSO – Will Todd

Durrington, Larkhill & Bulford

Beat Manager – PC Jayne Wilby
PCSO – Luke Woodward

2. NPTs - Current Priorities & Consultation Opportunities:

Up-to-date details about Neighbourhood Policing Teams including team membership, current priorities and forthcoming community consultation events can be found on our Wiltshire Police Website.

□ Visit NPT website at: www.wiltshire.police.uk

3. Police and Crime Commissioner: Angus Macpherson

Please contact via the Office of the Police and Crime Commissioner Tel. 01380 734022 or <https://www.wiltshire-pcc.gov.uk/Contact/Contact-Us.aspx>

4. Performance and Other Local Issues

As reported in previous updates we have seen a rise in recent months in certain crime types but it should be noted that Amesbury Community Area continues to be one of the safest areas to live and work as it has one of the lowest crime levels in Wiltshire which in turn has some of the lowest crime levels in the UK. The crime levels are still lower than those that were recorded in 2010/11.

In December 2012 the neighbourhood teams covering the Amesbury area executed over 10 search warrants which resulted in a significant amount of property being recovered. We have been able to match up the property with the victims and some of the property has been returned to the rightful owners. We still have some property which we believe is stolen but are unable to find the owners. This reinforces the important message that people should report all thefts to the police.

We have also seen an increase in the number of violent crimes being reported. This is partially due to the return of 4000 soldiers from Afghanistan. About half of these crimes are linked to reports of domestic abuse where the victims often suffer in silence. Wiltshire Police, Wiltshire Council and partner agencies have, over the past years, encouraged people to come forward to report such crimes so that preventative measures can be put in place to reduce future crimes taking place.

Wiltshire Police - 170 years of public service

The Neighbourhood Policing Team has been working hard over the past year to tackle the root causes of anti-social behaviour and it is pleasing to see that this work is starting to pay dividends and we continue to see a 15% reduction in ASB. In December the Amesbury NPT held a very successful meeting with over 20 young people in Amesbury with a view to exploring how we can work together to reduce ASB. The meeting was also attended by a number of youth workers. It was also very encouraging to have Amesbury's Mayor and Town Clerk at the meeting as it demonstrated to all concerned that the views of young people were being taken seriously. A working group of young people was formed and it is hoped that they will make an application for funding to Amesbury Community Area Board.

The speeding working group, led by Cllr Graham Wright, continues to work hard to reduce speeding in local communities and has attracted over 30 people who have now come to the meetings. It is acknowledged that the Community Speed Watch scheme, which is a partnership between Wiltshire Council and Wiltshire Police, is not operating as it should due to the recent departure of the scheme administrator. The scheme is presently being kept in operation temporarily by two Police Officers who are on 'light duties'. It is hoped that a replacement administrator will be recruited soon.

Christian Lange
Sector Commander
Amesbury and Tidworth.

EM Amesbury	Crime				Detections*	
	December 2010 - November 2011	December 2011 - November 2012	Volume Change	% Change	December 2010 - November 2011	December 2011 - November 2012
Victim Based Crime	1034	1152	118	11%	21%	20%
Domestic Burglary	25	34	9	36%	8%	12%
Non Domestic Burglary	136	158	22	16%	1%	2%
Vehicle Crime	96	112	16	17%	6%	5%
Criminal Damage & Arson	282	253	-29	-10%	17%	15%
Violence Against The Person	195	245	50	26%	48%	45%
ASB Incidents (Year to Date)	848	725	-123	-15%		
<p>Wiltshire Police are compared against a group of 8 most similar forces. Wiltshire Police have performed in line with peers and better than average for Victim Based Crime and Domestic Burglary in the previous 12 month period (November 2011 - October 2012).</p> <p>* Detections include both Sanction Detections and Local Resolution</p>						

WILTSHIRE COUNCIL

AMESBURY AREA BOARD, 22 November 2012

IMPACT OF WELFARE REFORM BILL

1. On 8 March 2012 the Welfare Reform Act 2012 was approved. This government change to welfare is designed to simplify the benefit system and encourage people to work. It will affect many people across the country and if you are in receipt of benefit, or an employer, then it will affect you too. The council is working with partners to make sure information and support is available to all those who need it. The changes include:
 - Benefit cap
 - Under-occupation rules (housing benefit)
 - Universal credit
 - Disability Living Allowance
 - New Council tax scheme
 - New social fund
2. Further information is available on the council's website:
<http://www.wiltshire.gov.uk/counciltaxhousingandbenefits/welfare2012reform.htm>.
Or telephone the council on: **0300 456 0100**
3. Wiltshire Money, the financial inclusion partnership for the county has commissioned a short 'infographic' which will be shown at the meeting.

Report to Amesbury Area Board
Date of Meeting 31 January 2013
Title of Report Area Board Grants

Purpose of Report

To ask Councillors to consider :

(A) Two Grant Applications seeking 2012/13 Community Area Grant Funding

1. Amesbury Junior Football Club – Training & Kit for New Teams

Funding sought : £1,165 :

Recommended for **Approval**

2. Berwick St James Parish Meeting – Notice Boards

Funding sought: £600

Recommended for **Approval**

(B) Confirming an allocation of **£3,750** for community planning activities and administrative running costs, based on the following estimations below :

Salary (+ expenses) of part-time administrator (£15 per hour, working 15 hrs a week from mid Feb to end of April 2013)	£2,250
Consultation activities, public events, analysis	£500
Advertising & promotion (include website)	£500
Plans, questionnaires, other printing costs	£500

1. Background

- 1.1. Area Boards have authority to approve Area Grants under powers delegated to them by the Deputy Leader and Cabinet Member for Adult Care, Communities and Housing (4 April 2012). Under the Scheme of Delegation Area Boards must adhere to the Area Board Grants Guidance 2012/2013.
- 1.2. In accordance with the Scheme of Delegation, any decision of an Area Board that is contrary to the funding criteria and/or the officer's recommendation would need to demonstrate that the application in question has a wider community benefit, and give specific reasons for why this should justify an exception to the criteria.
- 1.3. The emphasis in the Coalition Government's Localism agenda supports the ethos of volunteering and community involvement and the nurturing of resilient communities. With this in mind Community Area Grants (CAGs) should be encouraged from and awarded to community and voluntary groups. Likewise, Small Grants (new this year) should be awarded to similar groups, as well as un-constituted groups of people wanting to improve things near to where they live.
- 1.4. Amesbury Area Board has been allocated a 2012/2013 budget of £50,455 for community grants, small grants, community partnership core funding and area board/councillor led initiatives. An overspend of £6990 from 2011/12 has since been deducted from this figure – leaving £43,465 available. Subsequently, the Area Board has approved grants totalling £21,299 and an allocation of £3,000 to the Community Planning Group: Crime and Community Safety. This leaves the 2012/13 available budget at £19,166.
- 1.5. Applications of up to and including £1,000 can be made for a Community Area Grant, which will not require matched funding. Amounts of £1,000 - £5000 will be required to find matched funding. The area board will rarely award more than £5,000.
- 1.6. Small Grants, new for this year will fund up to £350, where the total cost of the project does not exceed £350. This grant is aimed at enabling groups (including those not formally constituted) to implement projects, involving local people to make their community a better place to live.
- 1.7. Area boards will not consider Community Area Grant (CAG) applications from town and parish councils for purposes that relate to their statutory duties or powers that should be funded from the local town/parish precept. However this does not preclude bids from town/parish councils, encouraging community projects that provide new opportunities for local people or those functions that are not the sole responsibility of the town/parish council.
- 1.8. In addition to CAGs and Small Grants, councillors can submit an Area Board/Councillor Led Initiative. This enables area boards to tackle sticky community issues and/or community identified priorities. Cabinet have emphasised that they do not wish these to be used to avoid complying with Community Area Grant criteria or for filling gaps where there are council service shortfalls. The application process and form has been updated to bring it in line with the other grants.

- 1.9. Officers are required to provide recommendations in their funding reports (except in the case of Area Board/Councillor led initiatives), although the decision to support applications is made by Wiltshire Councillors on the Area Board.
- 1.10. Funding applications will be considered at every Area Board meeting.
- 1.11. Applicants are encouraged to contact and seek funding help from Charities Information Bureau (CIB) who work on behalf of Wiltshire Council. CIB support community and voluntary groups, town and parish councils to seek funding for community projects and schemes both from the Area Board and other local and national funding sources.
- 1.12. Paper copies of funding applications no longer appear as part of the agenda in an attempt to reduce paper. They are however available on the Wiltshire Council web site with the area board agenda papers and hard copies available upon request.
- 1.13. The 2012/2013 funding criteria and application forms are available on the council's website (www.wiltshire.gov.uk/areaboards) and paper versions are available from the Community Area Manager.
- 1.14. All recipients of area board funding are expected to complete and return an evaluation form as soon as the project or activity has been completed and this should be accompanied by receipts and invoices, as well as photographs if possible. Failure to return the evaluation requested will preclude them from being considered for any future funding from the area board. This applies to all grants made by the area board.
- 1.15. A budget ring-fenced for the needs of young people will again be made available in 2012/2013. How this will be allocated will be the decision of the area board. £3,000 of this £5,053 budget was earmarked at the 19 July 2012 board meeting for the Bourne Valley Youth Transport Project.
- 1.16. The Amesbury Area Board has a separate Community Area Transport Group (CATG) budget of £17,500 for 2012/13.

Background documents used in the preparation of this Report	<ul style="list-style-type: none"> • Area Board Grant Guidance 2012/13 as presented for delegated decision • Amesbury Community Area Plan
--	---

2. Main Considerations

- 2.1. Councillors will need to be satisfied that grants awarded in 2012/13 are made to projects that can realistically proceed within a year of the award being made.
- 2.2. There will be 6 rounds of funding during 2012/2013. This are listed as below:

- 24th May
- 19th July
- 20th September
- 22 November 2013
- 31 January 2013
- 21 February 2013

3. Environmental & Community Implications

- 3.1. Area Board Grants contribute to the continuance and/or improvement of cultural, social and community activity and wellbeing in the community area, the extent and specifics of which will be dependent upon the individual project.

4. Financial Implications

- 4.1. Awards must fall within the Area Boards budget allocated to the Amesbury Area Board.
- 4.2. If grants are awarded in line with officer recommendations, the Amesbury Area Board will have a balance of £13,651 remaining for 2012/13.

5. Legal Implications

- 5.1. There are no specific legal implications related to this report.

6. HR Implications

- 6.1. There are no specific HR implications related to this report.

7. Equality and Inclusion Implications

- 7.1. Community Area Grants and Small Grants will give local community and voluntary groups, town and parish council's equal opportunity to receive funding towards community based projects and schemes, where they meet the funding criteria.
- 7.2. Implications relating to individual grant applications are outlined within section 8 – "Officer Recommendations".

8. Officer recommendations

Ref	Applicant	Project proposal	Funding requested
8.1	Amesbury Junior Football Club	Contribution for training equipment, courses and youth team football kit for new teams	£1,165

- 8.1.1. Officer recommendation – **to approve**

- 8.1.2. This application meets grant criteria 2012/13.

8.1.3. This application demonstrates a link to the Community Plan, as it will support a local youth sports club to improve and expand its facilities and expertise to inspire and encourage young people to engage in sport. This grant will also assist a local group in ensuring there are opportunities in this Area to be a healthier, more inclusive community and to engage in volunteering activities.

8.1.4. The Amesbury Junior Football Club was established in 1985 and is a well established local sports group, currently catering for nearly 200 young people (7 – 16 year olds). It is looking to replace and improve some of its equipment, kit, to ensure coaches are well trained and to increase the number of trained welfare officers. This expenditure is important not simply to ensure the club’s local reputation as a good quality sports club, but to also maintain the FA Charter Standard.

Ref	Applicant	Project proposal	Funding requested
8.2	Berwick St James Parish Meeting	New Parish Noticeboards x 2	£600

8.2.1 This application meets the community area grant scheme’s criteria and the officer’s recommendation is therefore to approve.

8.2.2 Berwick St James Parish Council are looking to replace the current village notice boards with 2 new boards, and will fund 50% of the costs from parish council funds.

8.2.3 The noticeboards are a vital source of communication for the village especially for those without email or online facilities. The present noticeboards have become increasingly dilapidated and allow moisture to enter and damage the notices (see photos below). The new noticeboards will be built of hardwood and properly weatherproofed.



Appendix (online):	Appendix 1 Grant application – Amesbury Junior Football Club Appendix 2 Grant Application – Berwick St James Parish Meeting
---------------------------	--

No unpublished documents have been relied upon in the preparation of this report.

Report Author	Karen Linaker, Community Area Manager Tel: 01722 434697 E-mail karen.linaker@wiltshire.gov.uk
----------------------	---

AMESBURY AREA BOARD

Items from the Central Forward Work Plan

Please note: this is a working document which is subject to change due to availability of relevant Officers/Partners and relevant time scales.

Date	Cabinet Member	Location	Area Board Provisional Agenda Items <i>(excluding standard items including Partner Updates, Parish/Town Council Updates and Community Area Grants)</i> .
31 Jan	Portfolio Holder	Antrobus House	<ul style="list-style-type: none"> • SID Deployment programme • Good Neighbours • Impact of Welfare Reform • Parish Council Dog Fouling toolkit
21 Feb	TBC	Durrington Village Hall	<ul style="list-style-type: none"> • Blogsite briefings for councillors • Youth Service Update • End of Term review
30 May	TBC	Winterbourne Glebe Hall	<ul style="list-style-type: none"> • Election of Chair / Vice Chair • Review of local bus services – (CAM to be contacted when review is ready for Amesbury area) • Asset Management Strategy

Community Area Manager: Karen Linaker (karen.linaker@wiltshire.gov.uk)
 Democratic Services Officer: Kirsty Butcher (kirsty.butcher@wiltshire.gov.uk)
 Service Director: Mark Smith (mark.smith@wiltshire.gov.uk)

Updated: 21 January 2013

